



Comune di
PIEVE A NIEVOLE
(Provincia di Pistoia)

PIANO ATTUATIVO PA/4
Area residenziale (PEEP-LC) in via del Melo

TAV. 7
TIPOLOGIE EDILIZIE
1:200

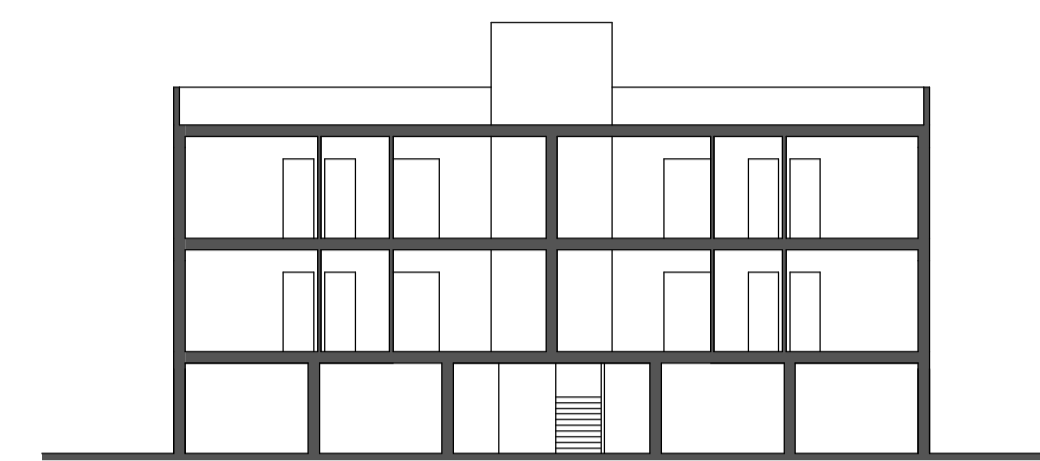
Progettista incaricato
Collaboratrice
Studi geologici ed ambientali
Studi idrologici ed idraulici
Responsabile del procedimento
Garante per la comunicazione

Dott. Arch. MASSIMO PAGANELLI
Dott. Arch. CLAUDIA RAUTY
Dott. Geol. RAFFAELE LOMBARDI
Dott. Ing. SIMONE GALARDINI
Geometra DANIELE TECI
Geometra PATRIZIO MANCINI

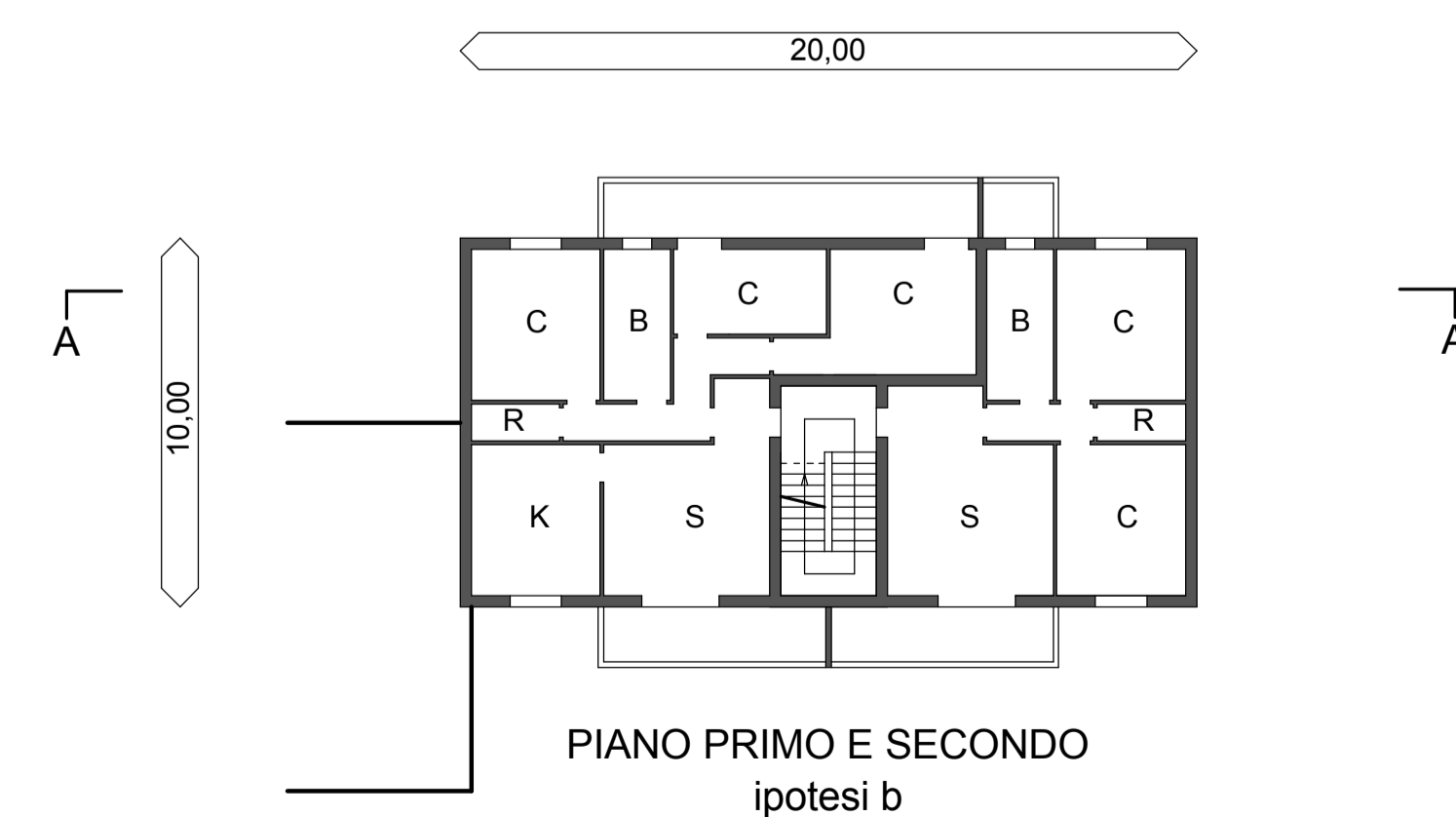
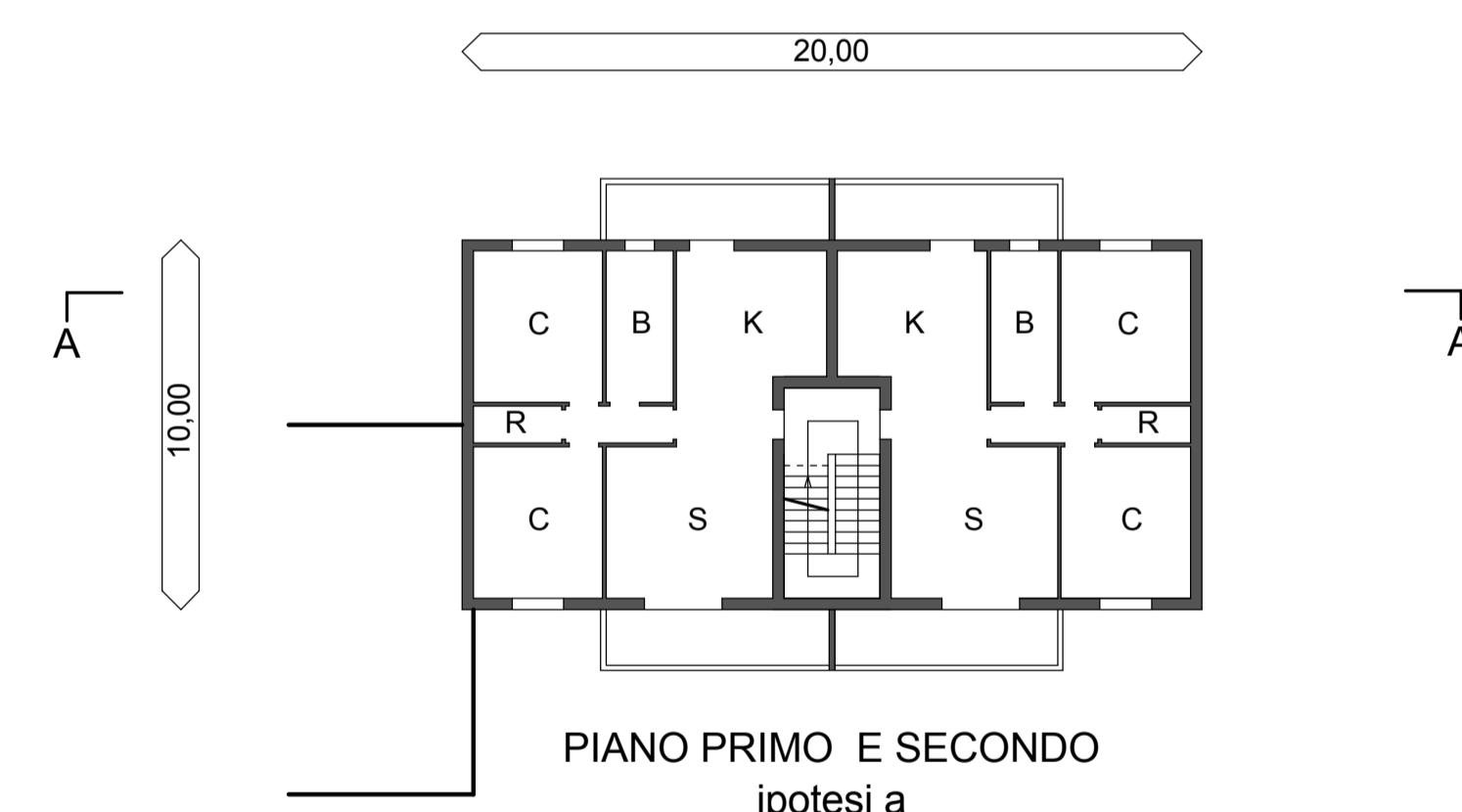
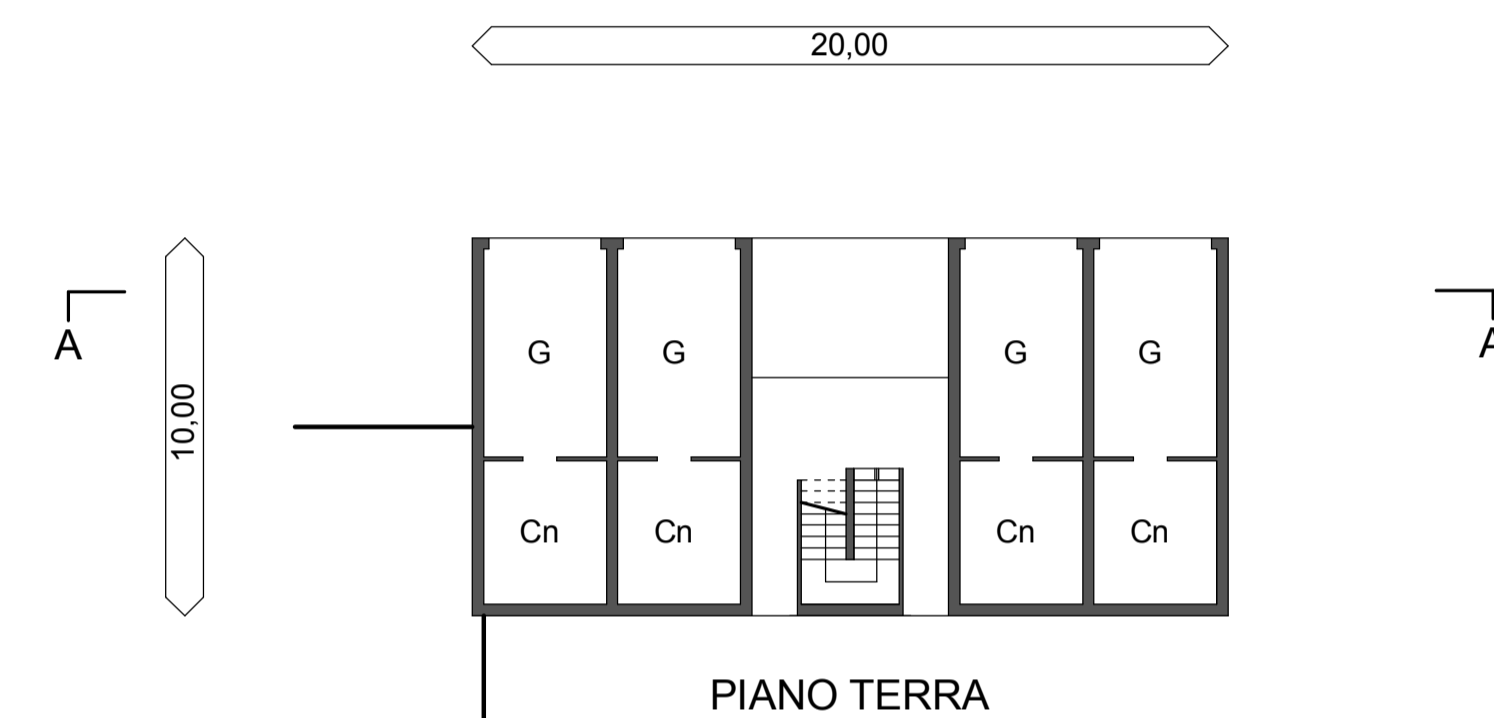
FEBBRAIO 2013

AP AP

Schema di aggregazione - ipotesi A e B
PEEP - UE1 e UE2

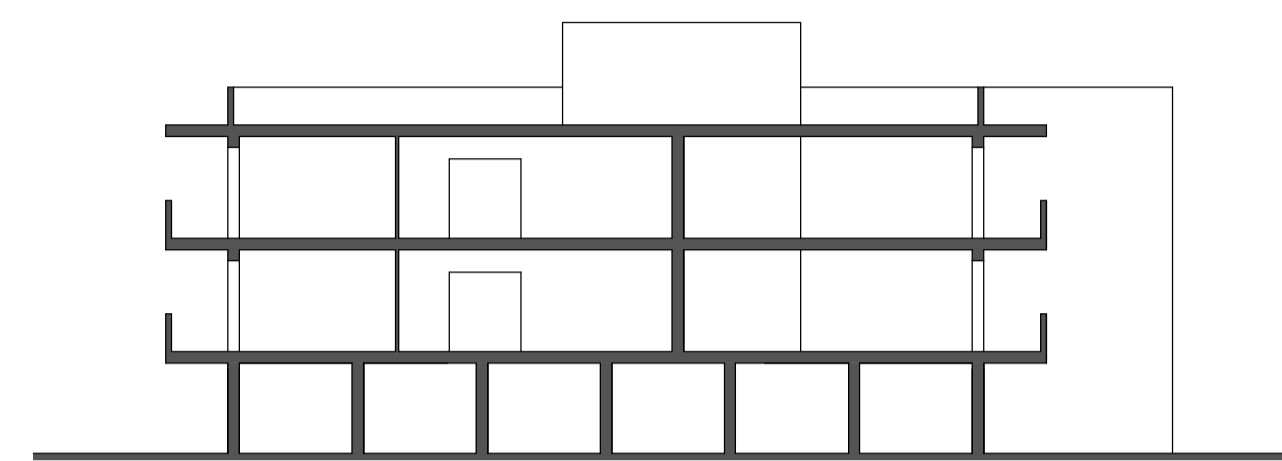


SEZIONE A-A

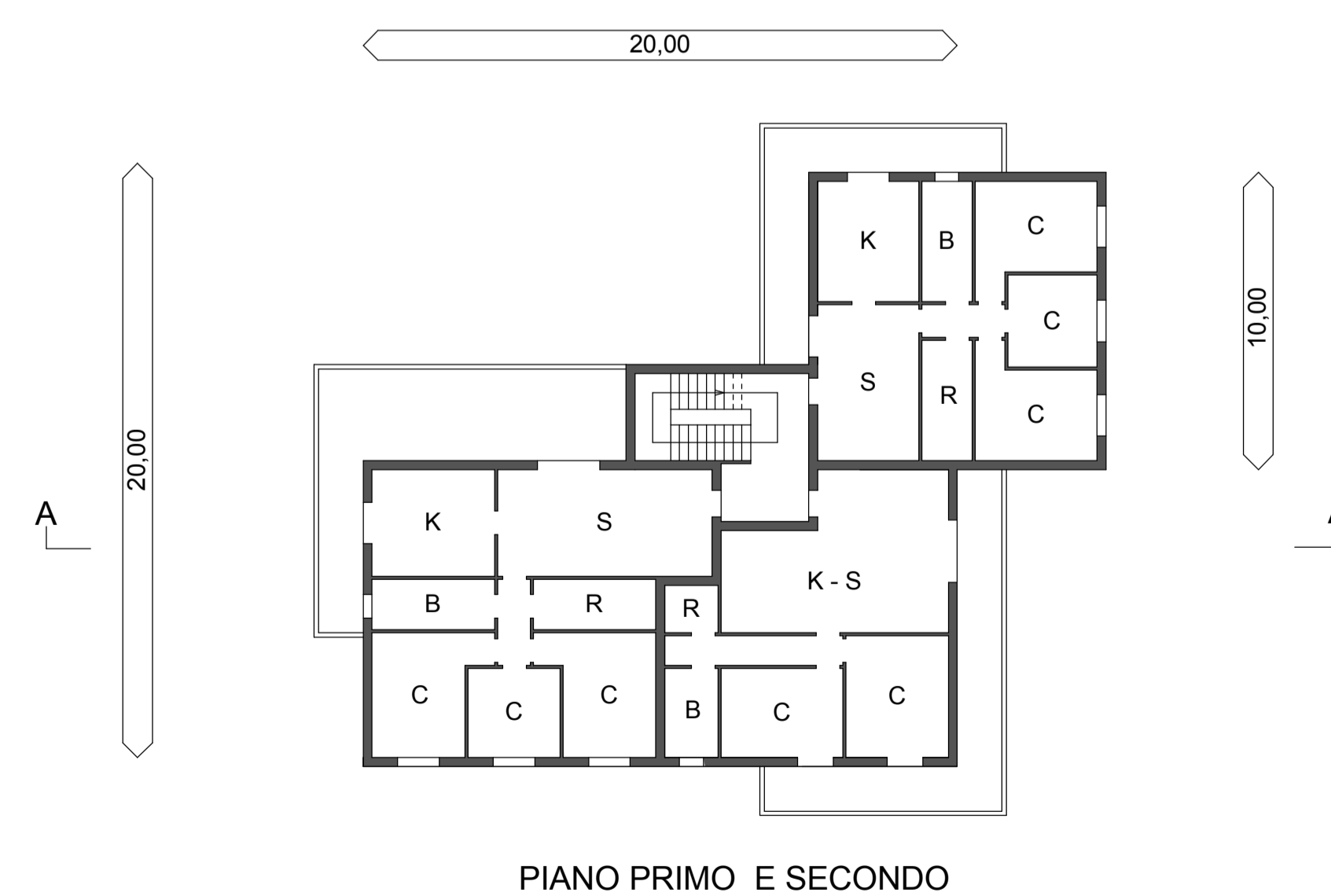
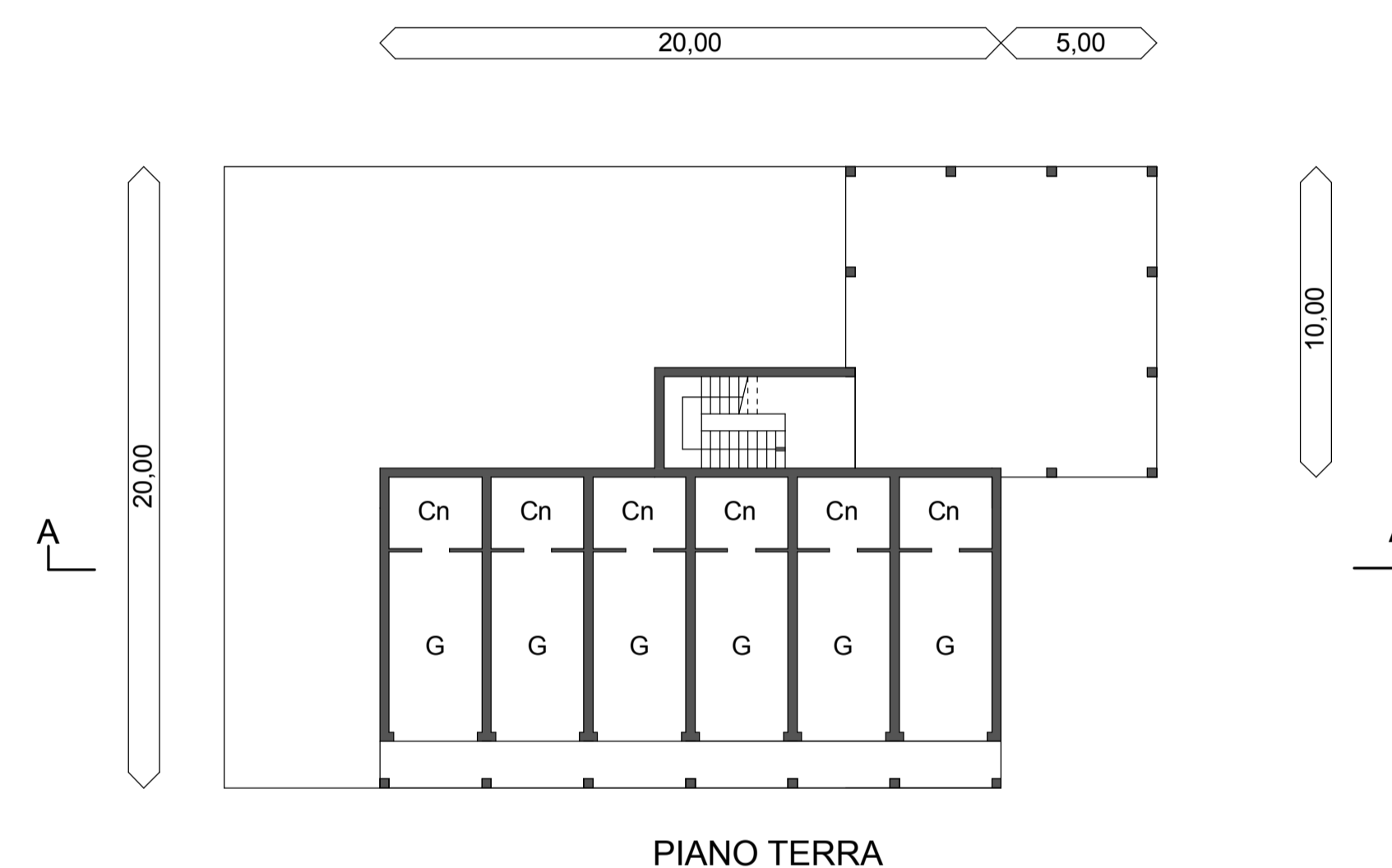


AP AP AP

Schema di aggregazione - ipotesi A e B
LC - UE2

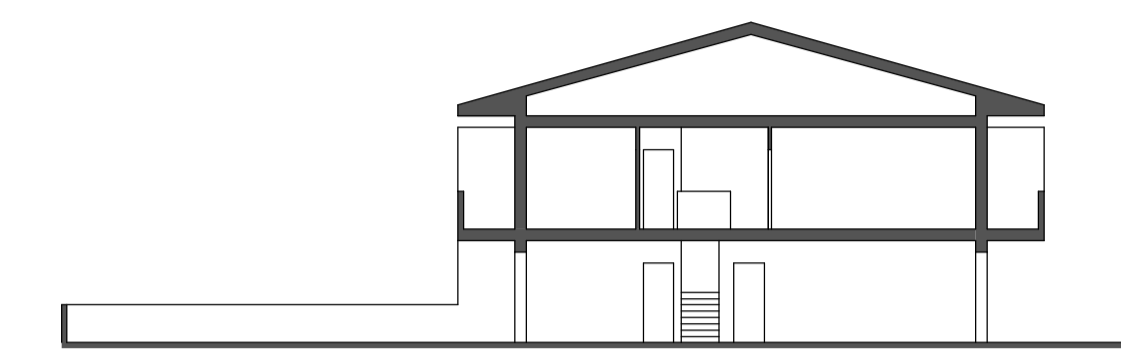


SEZIONE A-A

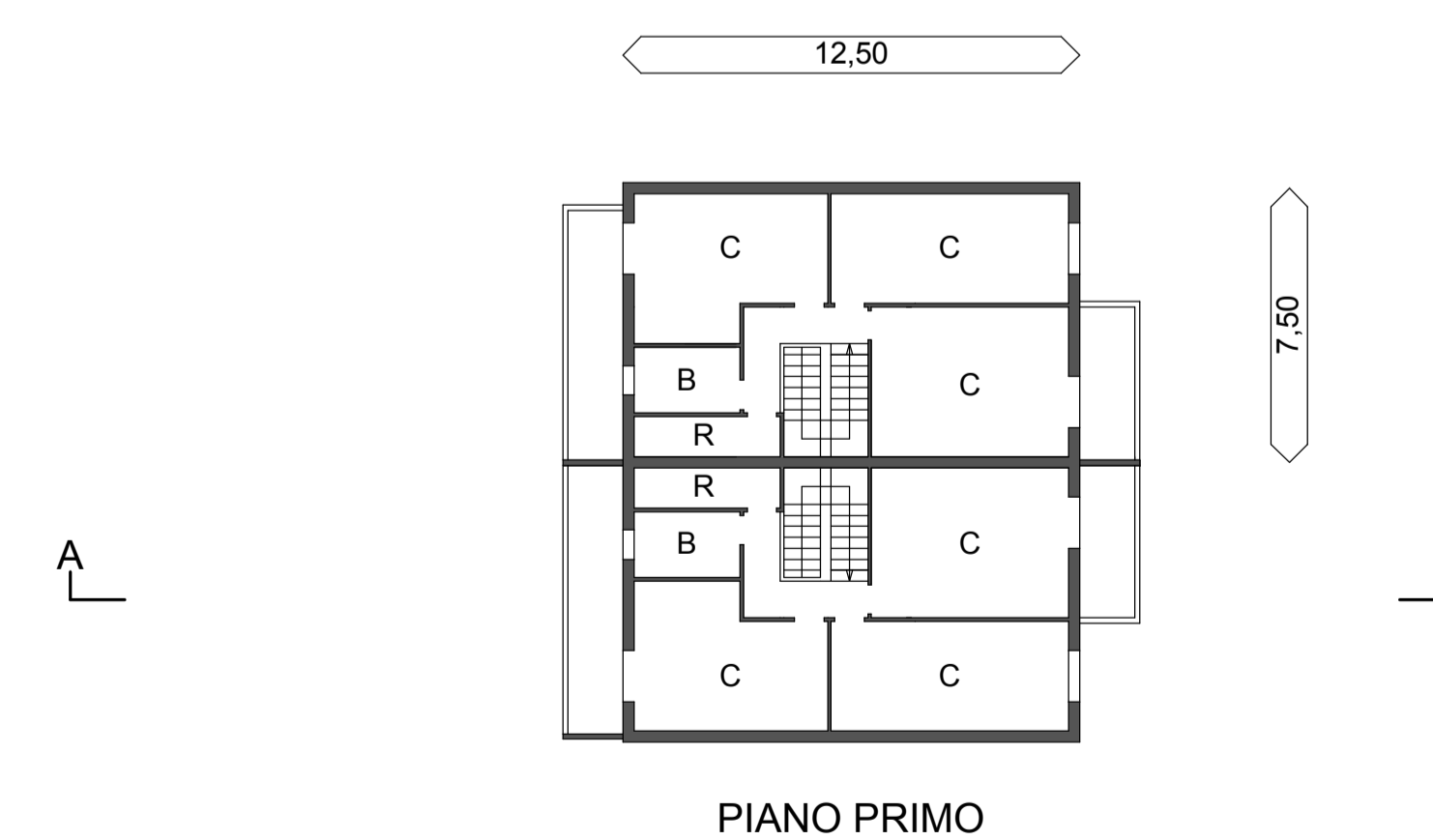


AD
AD
AD
AD

Schema di aggregazione - ipotesi A e B
LC - UE2
PEEP - UE2

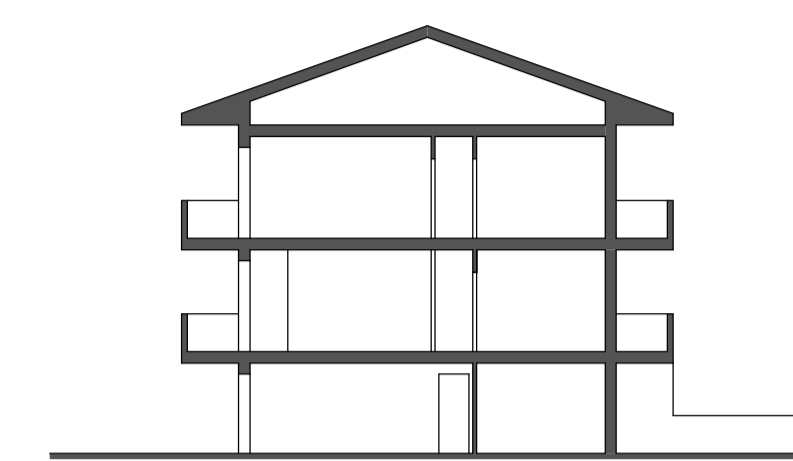


SEZIONE A-A



AD AD AD

Schema di aggregazione - ipotesi B
LC - UE2
PEEP - UE2



SEZIONE A-A

