

Richiesta per la realizzazione del piano
attuativo PA4 ubicato in Via Cantarelle

Proposta residenze
monofamiliari

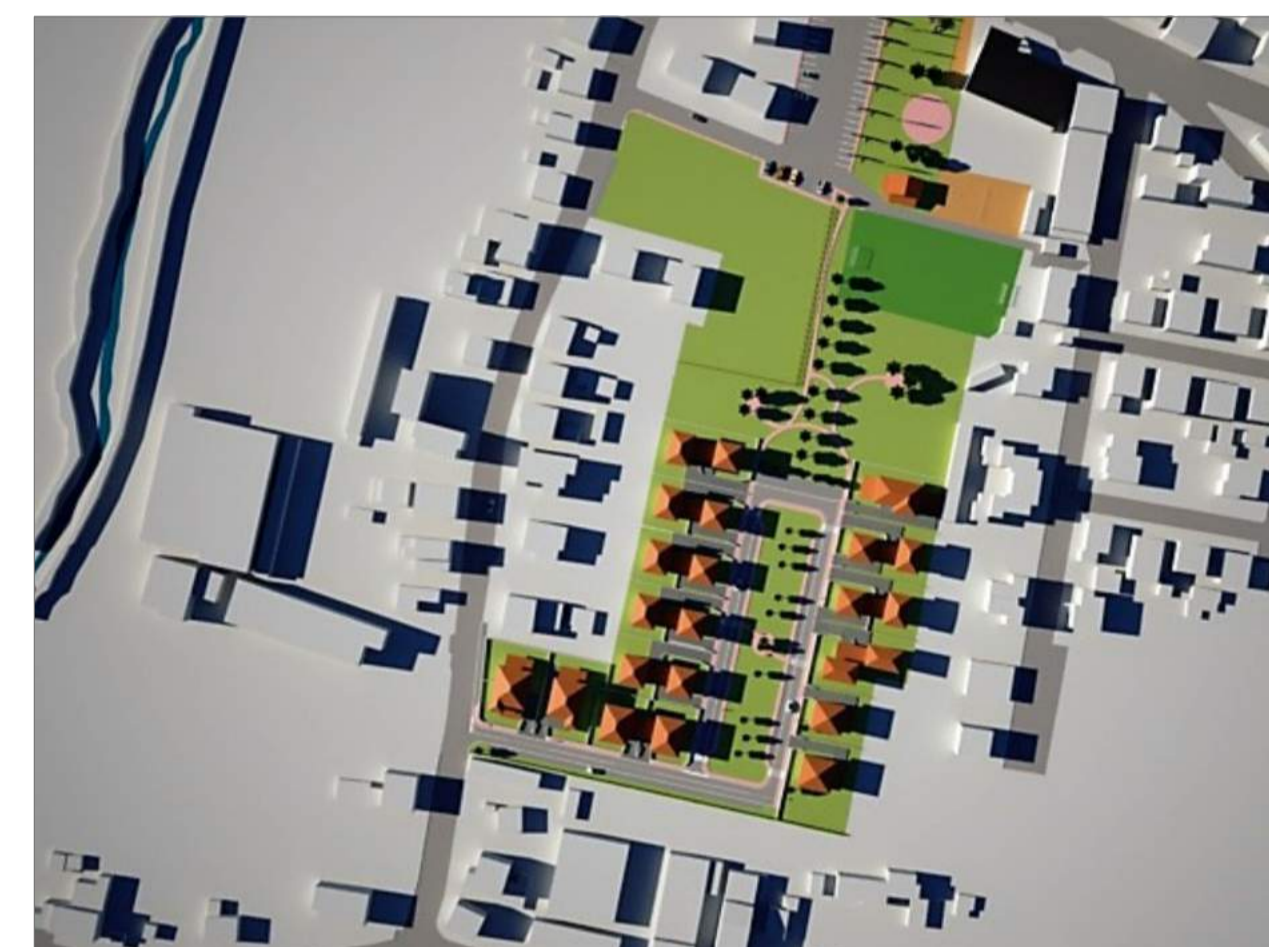
SCALA 1:500
1:200

tavola:

11

Il progettista: Dott. Arch. SCARDIGLI ALESSANDRO

Proprietari: Sig. Cardelli Piero, Sig.ra Martini Carla,
Sig.ra Iacopini Ornella, Sig. Iacopini Nello,
Sig. Iacopini Angelo, Sig.ra Romiti Elena,
Sig.ra Ciampi Sandra, Sig. Romiti Romano,
Sig. Vannelli Vittorio

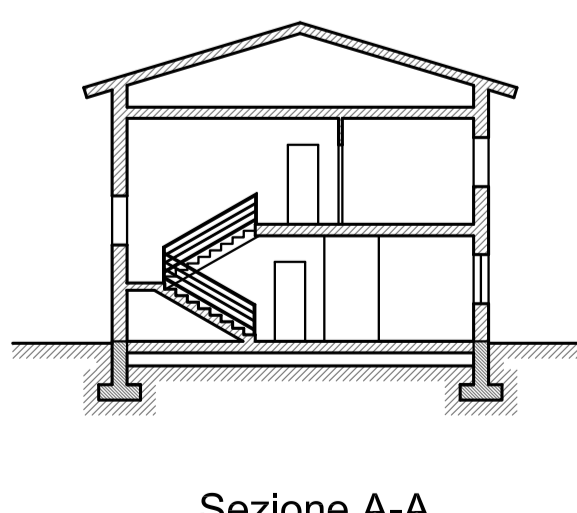
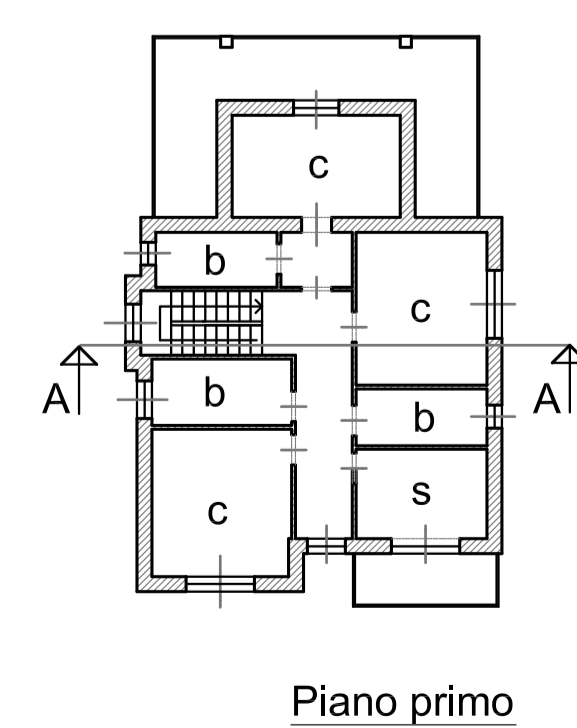
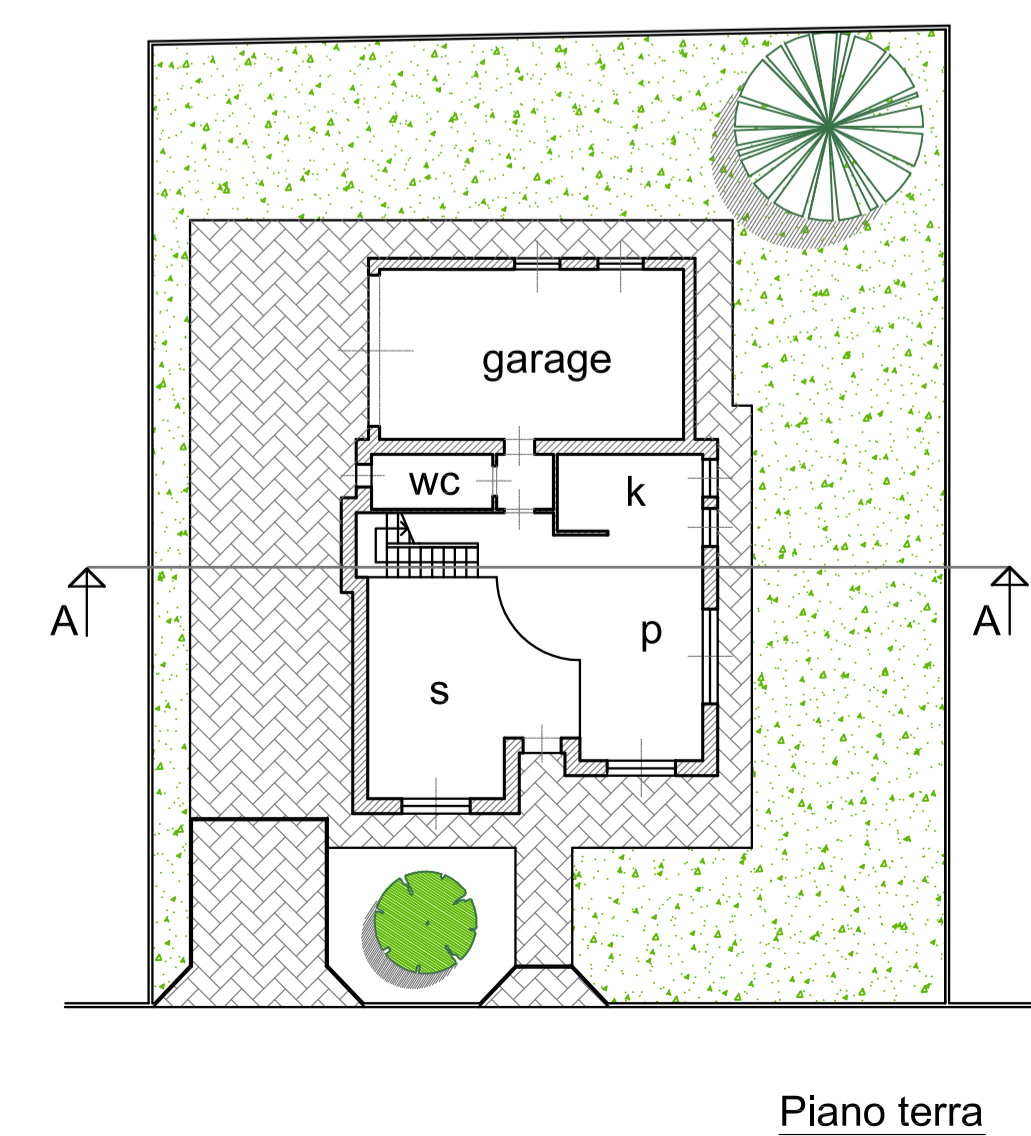


Planimetria
generale
scala 1:500

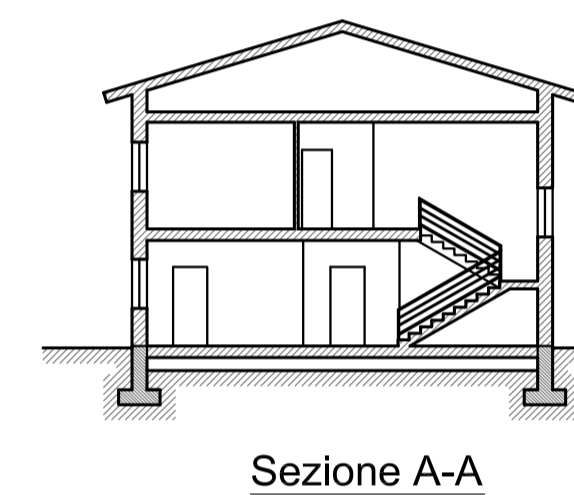
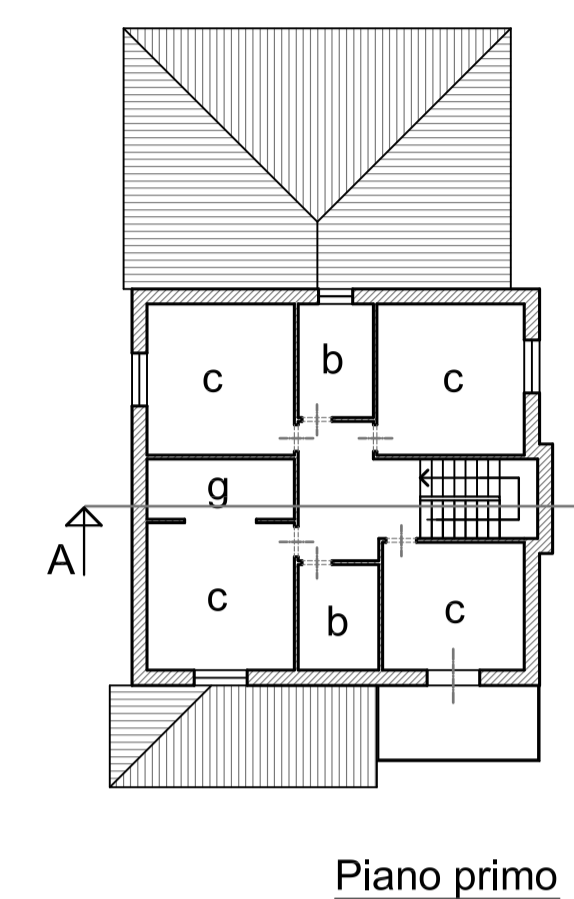
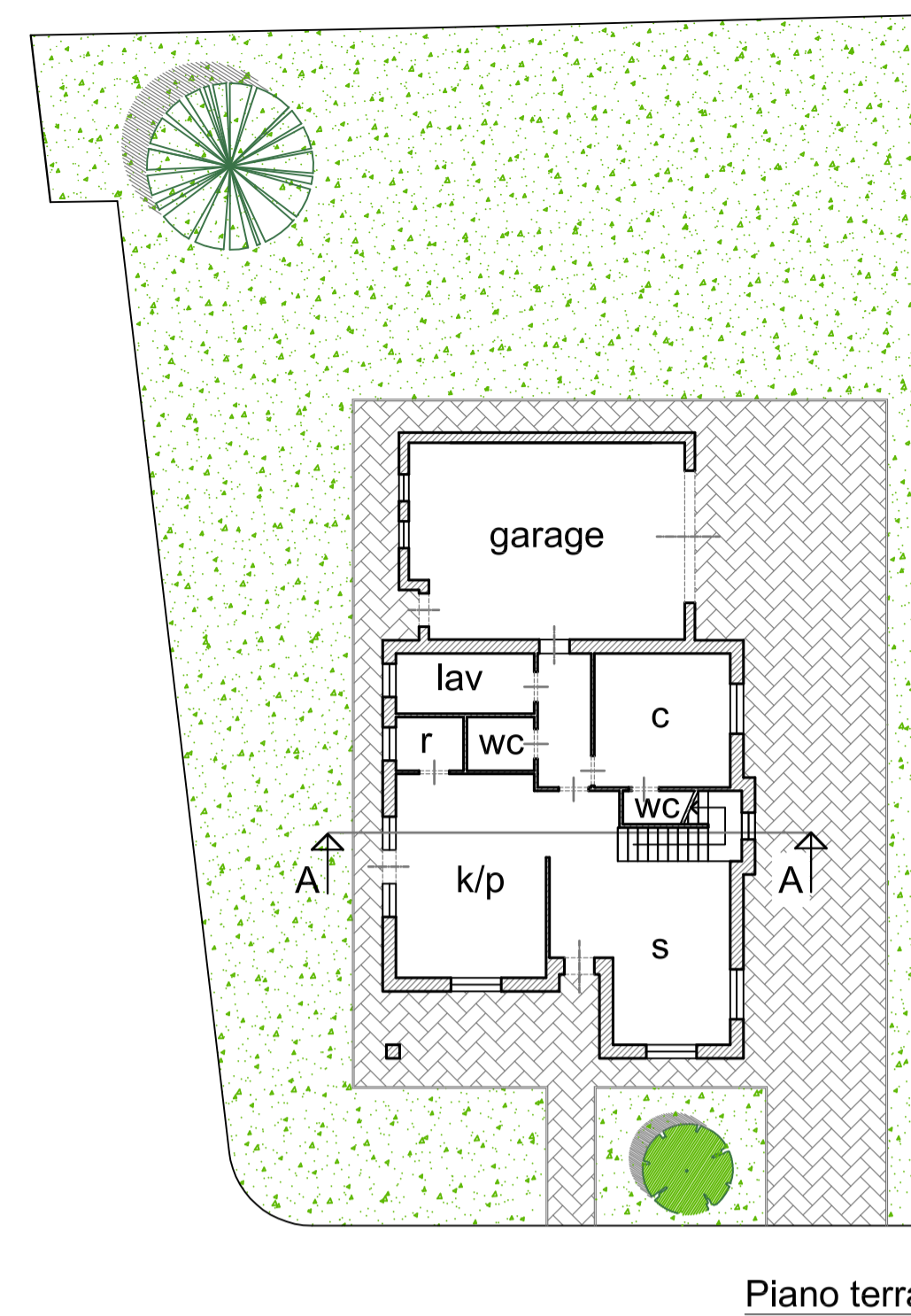
I proprietari:	Il progettista
Sig. Cardelli Piero	Arch. Alessandro Scardigli
Sig.ra Martini Carla	
Sig.ra Iacopini Ornella	
Sig. Iacopini Nello	
Sig. Iacopini Angelo	
Sig.ra Romiti Elena	
Sig.ra Ciampi Sandra	
Sig. Romiti Romano	
Sig. Vannelli Vittorio	

Alessandro
Scardigli
architetto

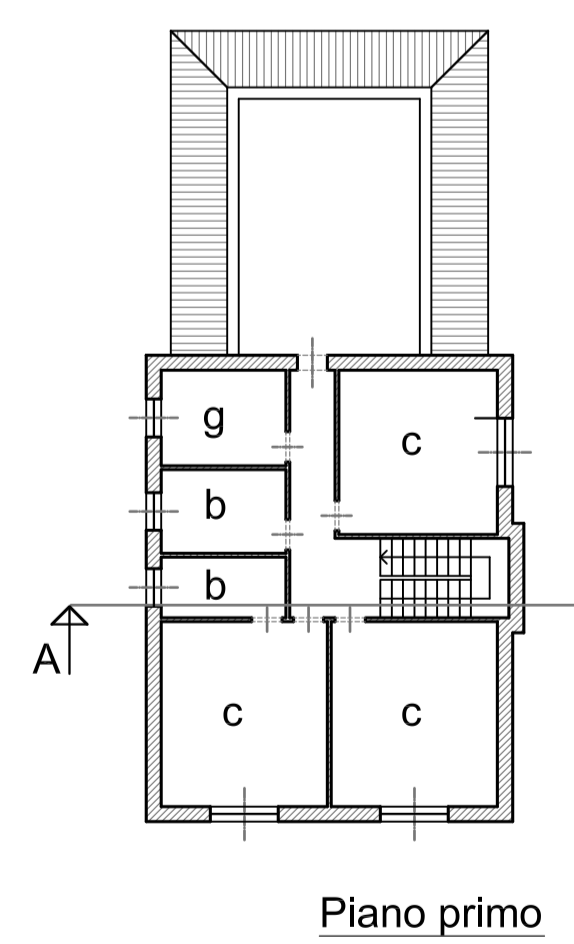
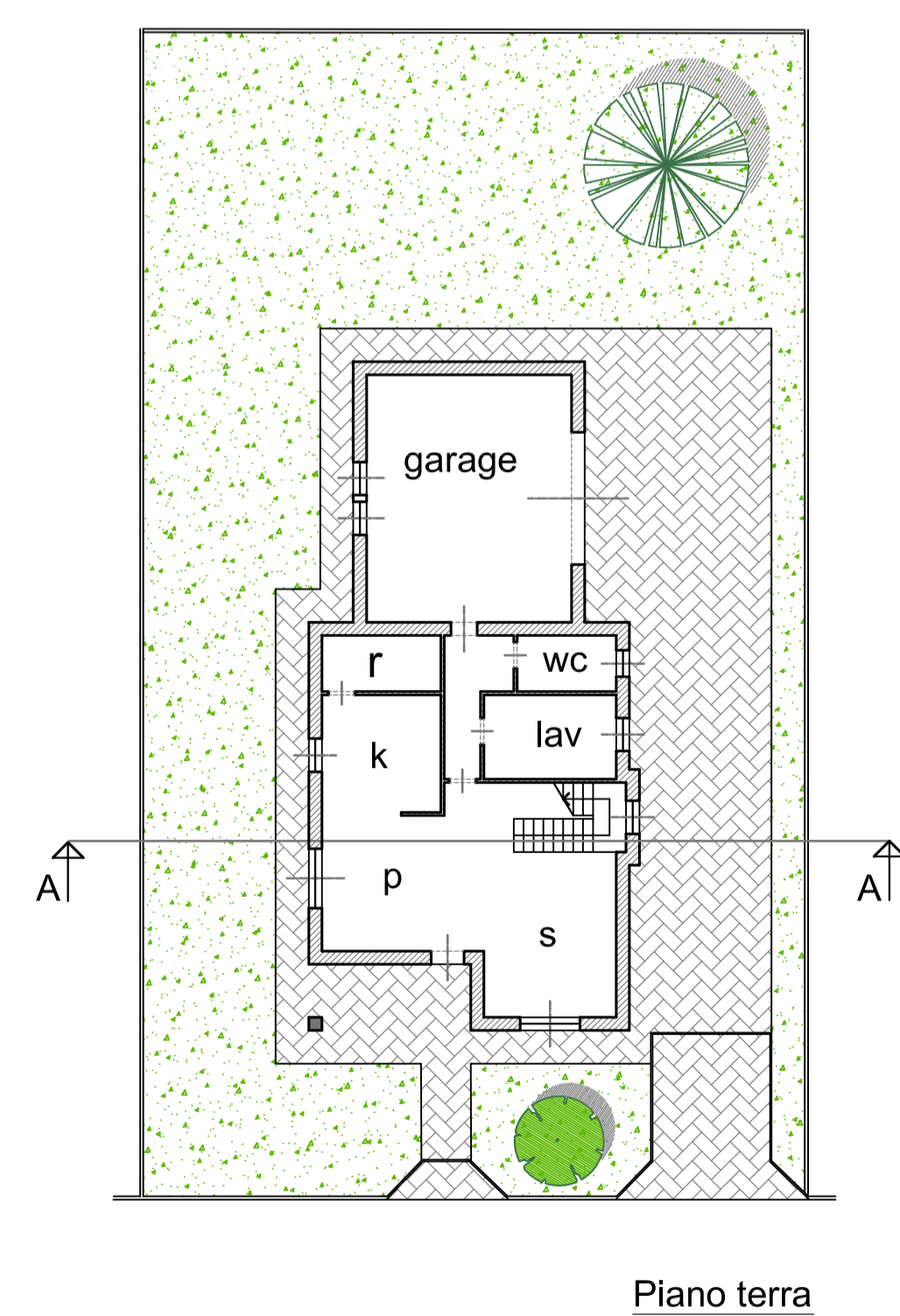
via G. Martini, 1
51016 Montecatini Terme (PT)
Tel. 0572 951243
Cell. +39 338 954633 R



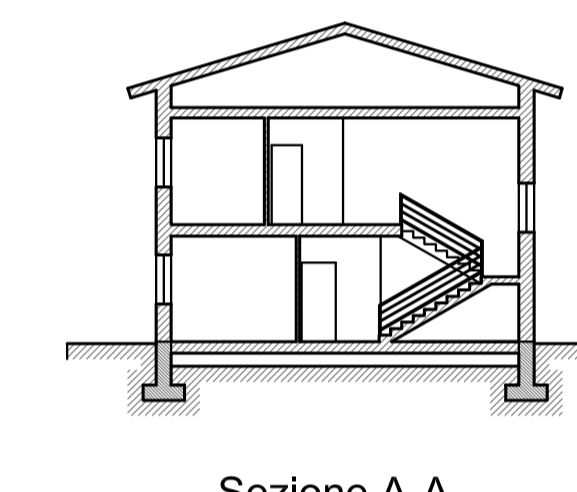
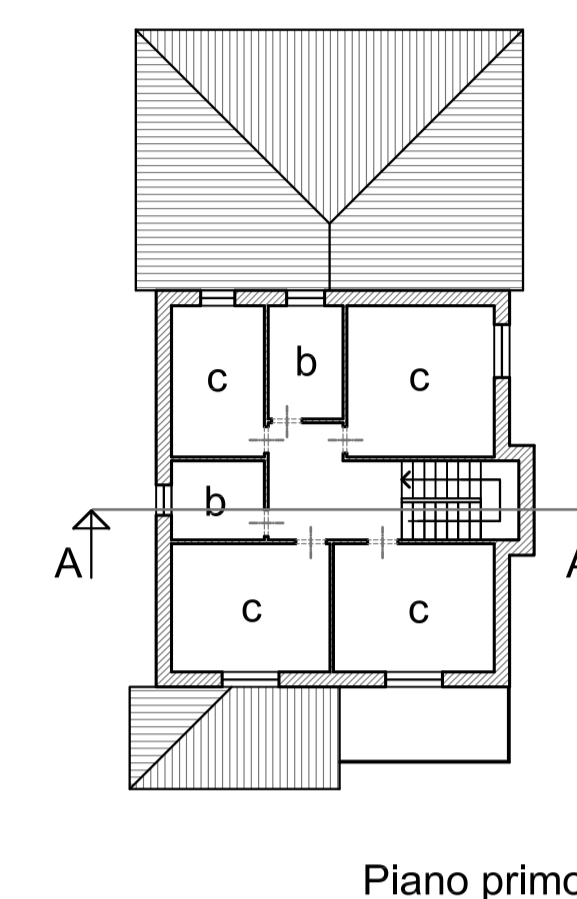
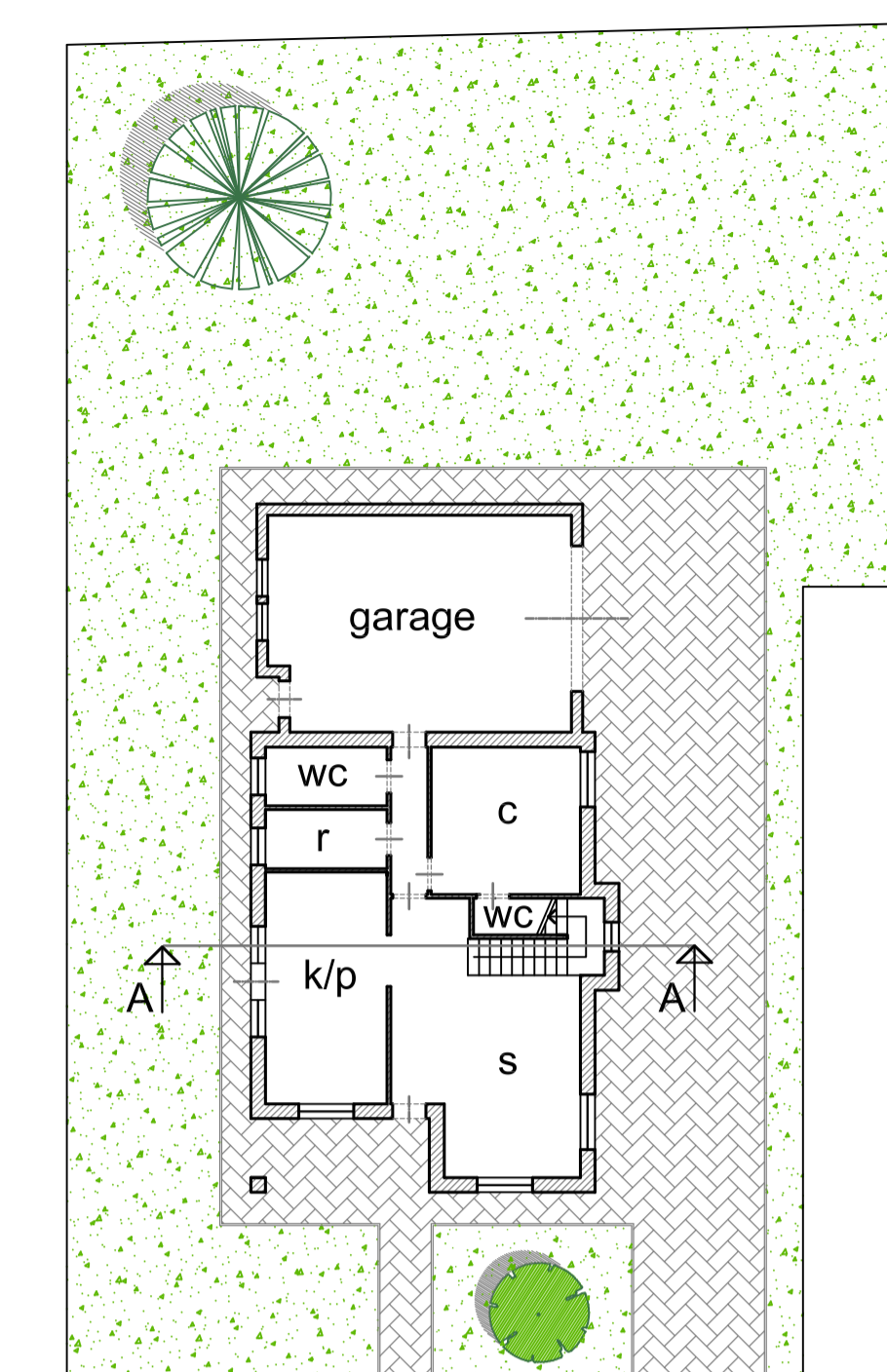
Tipologia 13 e 14



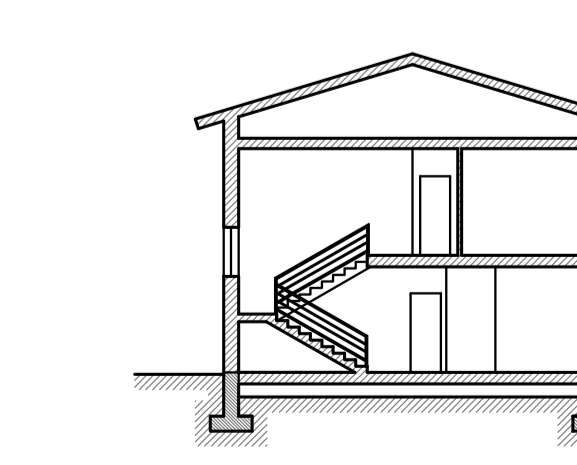
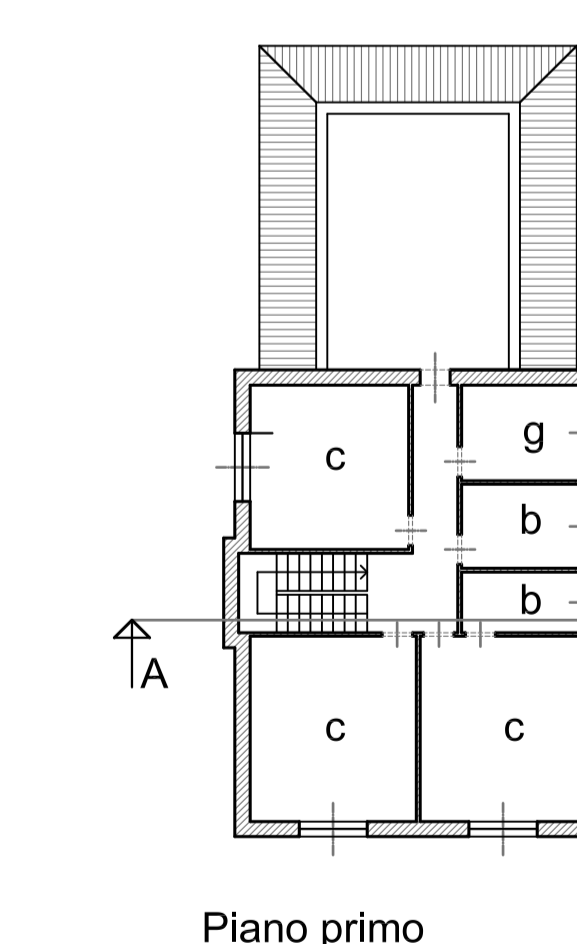
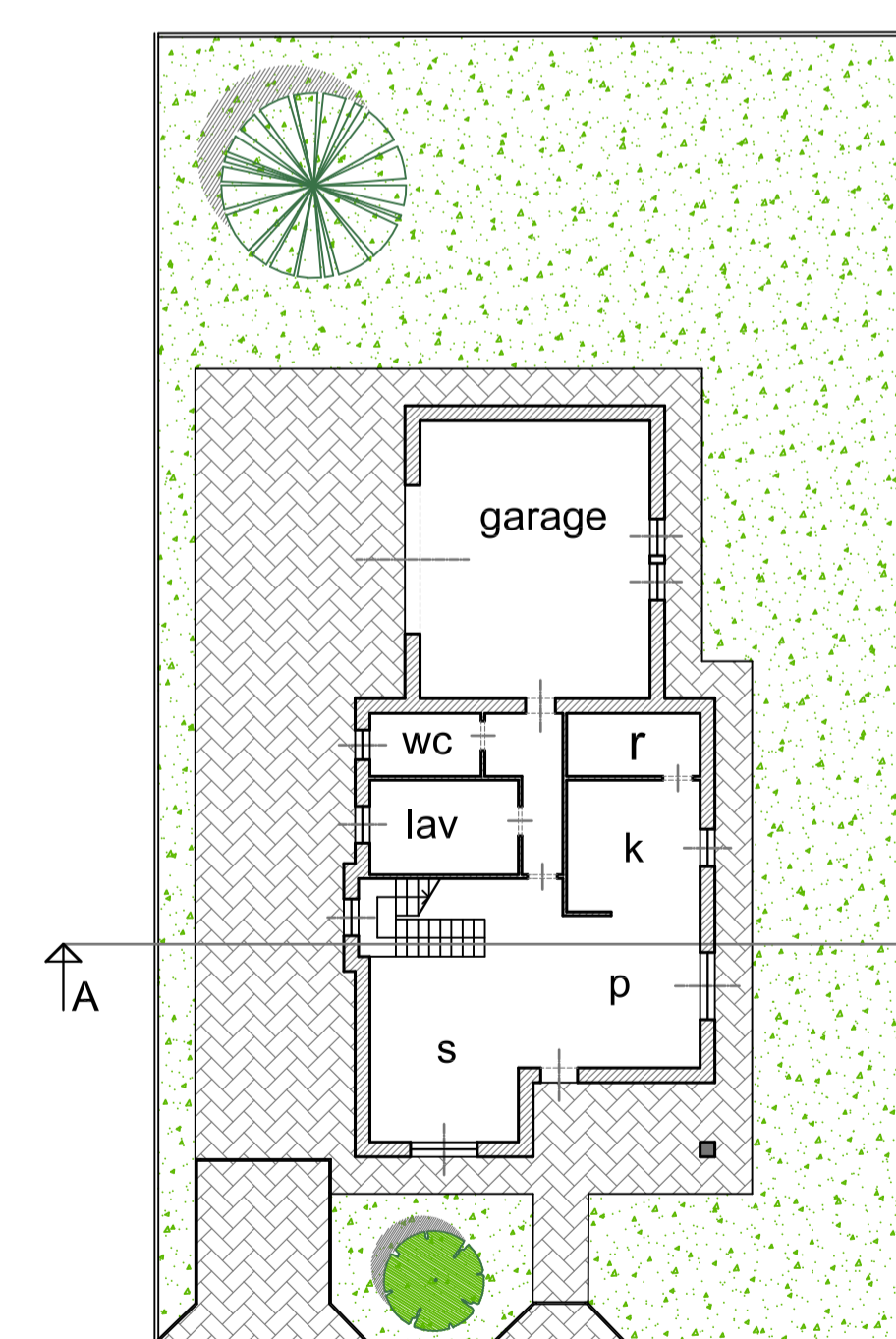
Tipologia 1



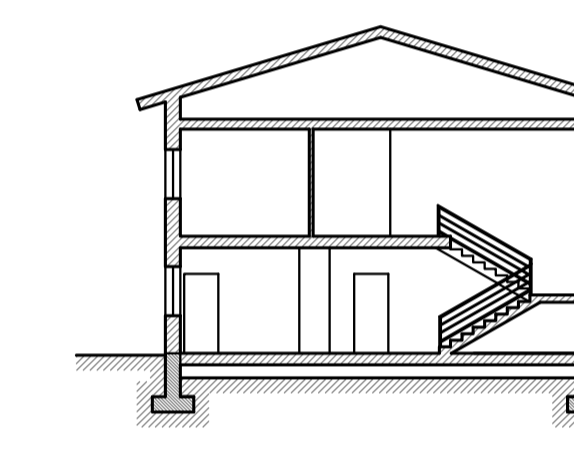
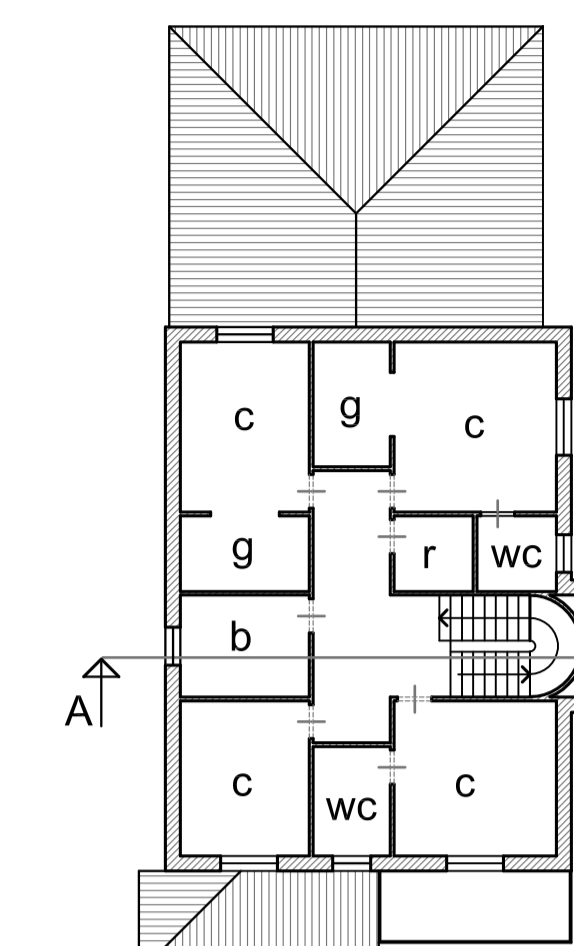
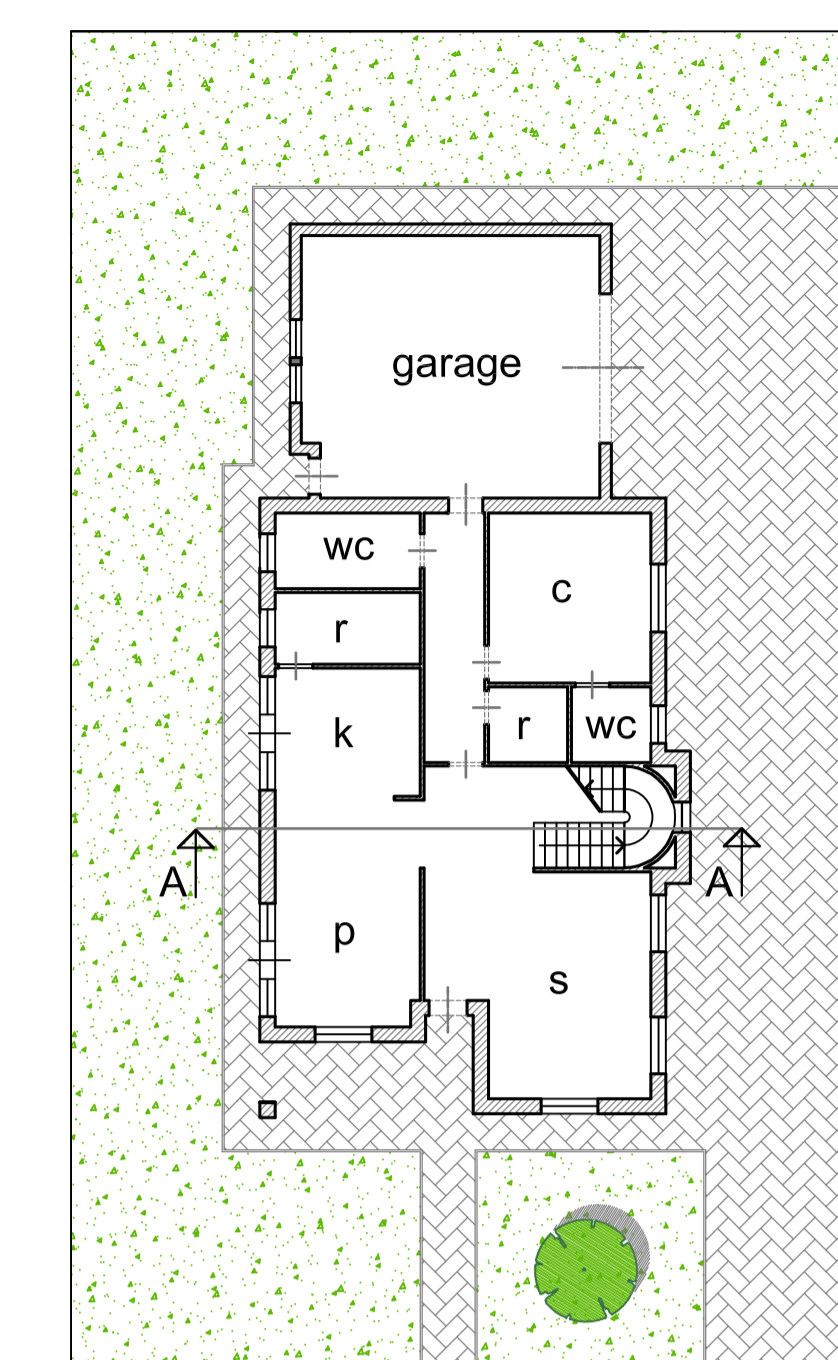
Tipologia 5, 6, 7 e 8



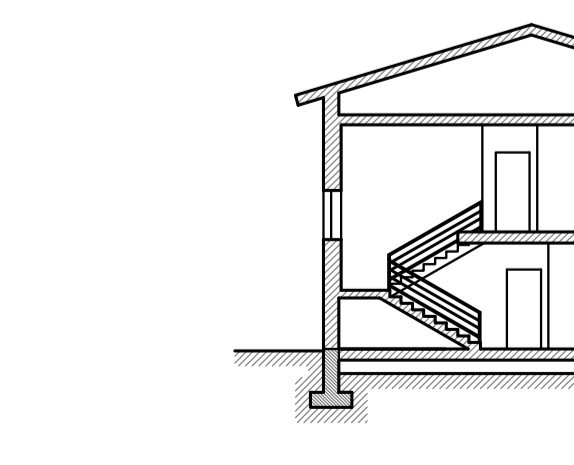
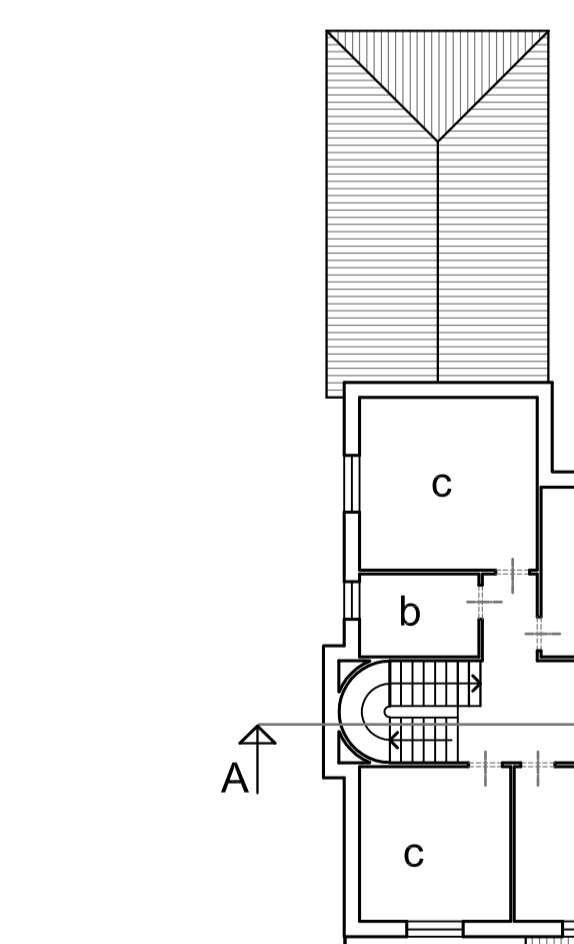
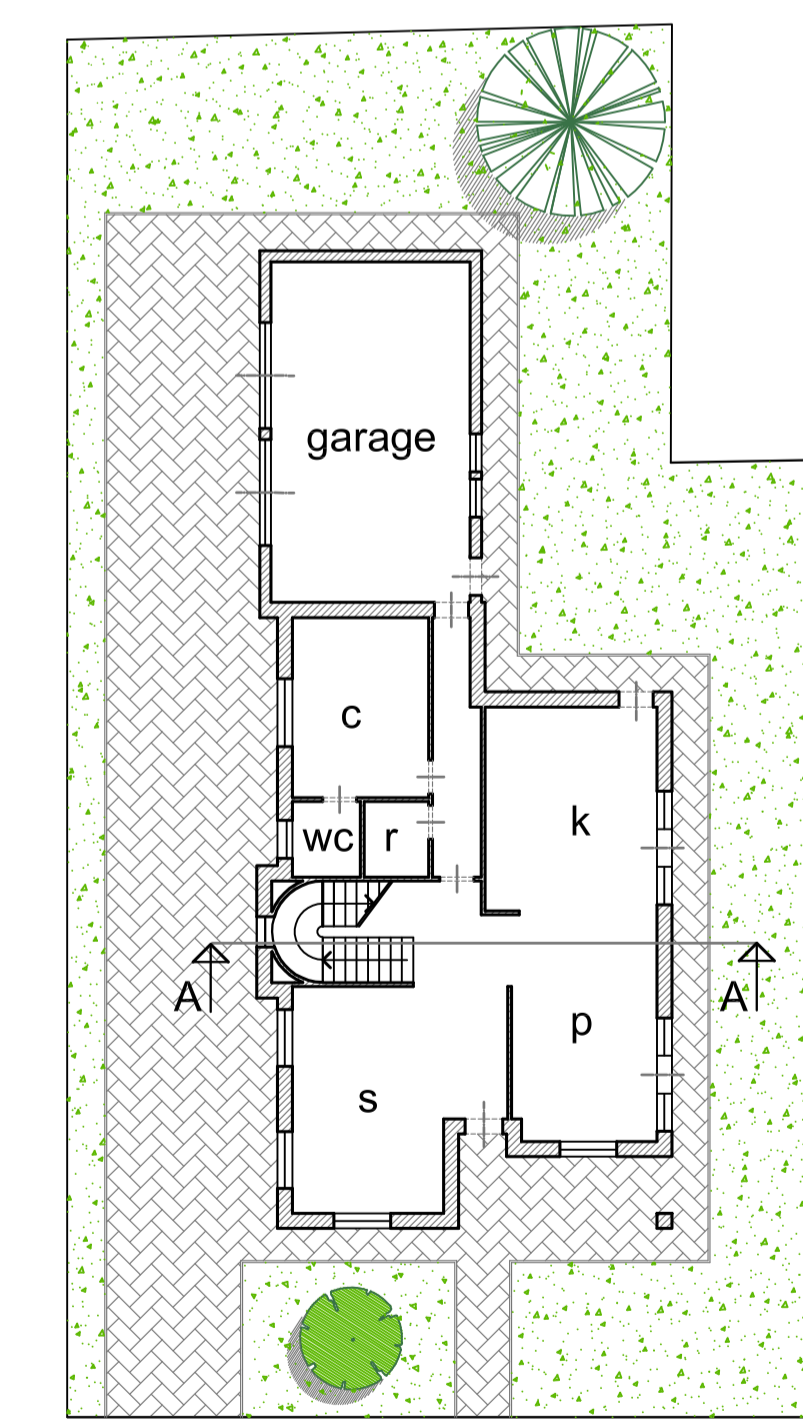
Tipologia 2



Tipologia 9, 10 e 11



Tipologia 3 e 4



Tipologia 12